

Comprehensive MRI Analysis Report

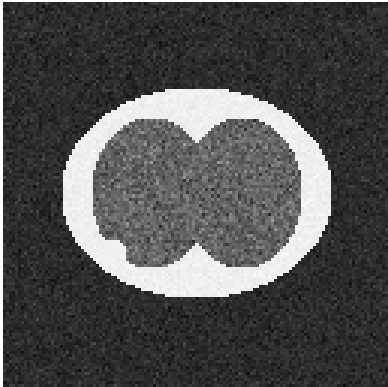
ADVISORY ONLY - NOT FOR CLINICAL DECISION MAKING

Study Information

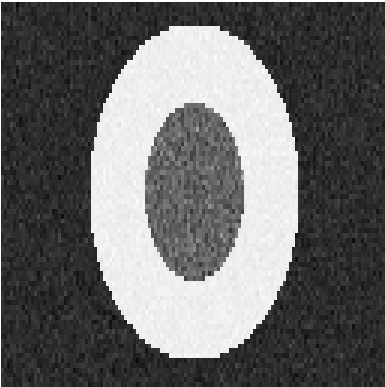
Job ID: e9e17365-2c3d-41e5-af42-f3e787ebc52f
Analysis Date: 2025-12-27 02:29 UTC
Task Type: Spine Mri Validation V1
Status: COMPLETED

Scan Images

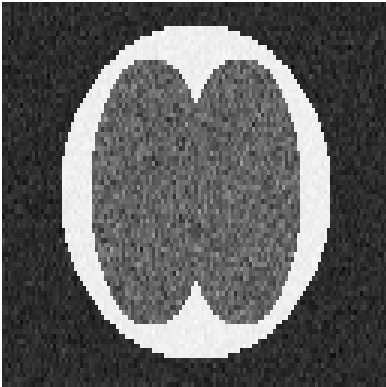
Representative slices from the analyzed volume (center cuts)



Axial (Transverse)



Sagittal



Coronal

MRI Analysis Results

Measurements

Canal Minimum Diameter:	8.0 mm
Canal Volume:	98.0 mm ³

Analysis Quality

Model Confidence: 39.4%
Flags: CANAL_STENOSIS_SUSPECT, LOW_CONFIDENCE

Model Information

Model ID:	spine_canal_unet
Model Version:	1.0.0
Runtime:	538 ms

Report generated: 2025-12-27 02:35 UTC

Service: bee2-spine-mri v1.0.0

DISCLAIMER: ADVISORY ONLY: This result has NOT been clinically validated. Do not use for clinical decision-making without proper validation.